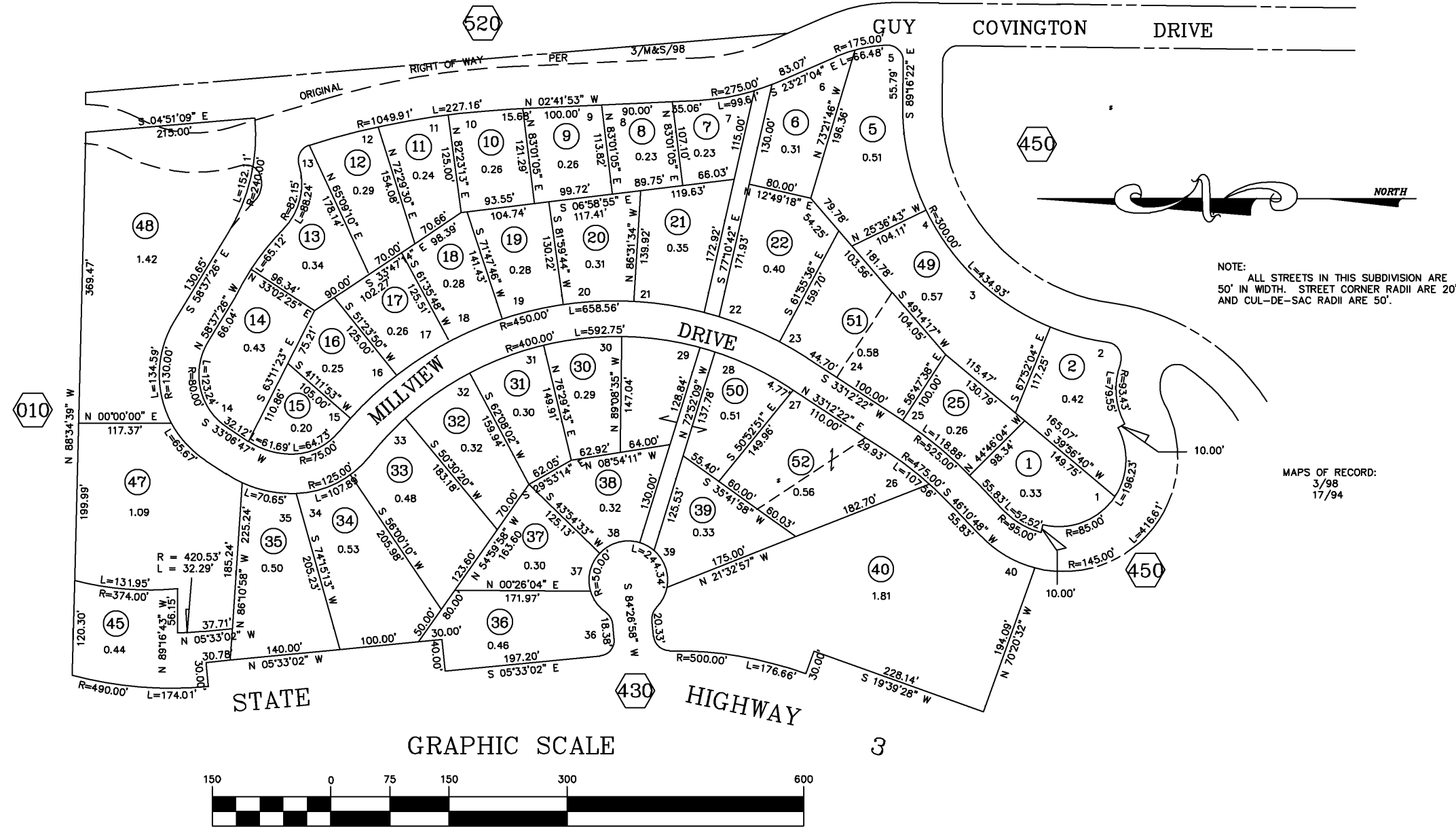


PORTION OF THE NE 1/4 OF SECTION 9, T. 35 N., R. 8 W., M.D.B.& M.  
 (PART OF COVINGTON MILL SUBDIVISION)

10-440

T.A.C. 70-000



ALTHOUGH BASED IN WHOLE OR IN PART ON RECORDED INFORMATION, THIS MAP IS NOT A RECORD OF SURVEY AND ITS USE IS FOR ASSESSMENT PURPOSES ONLY.

COPYRIGHT 1991, TRINITY COUNTY ASSESSOR'S OFFICE

( IN FEET )  
 1 inch = 150 ft.

TRINITY COUNTY ASSESSOR'S OFFICE  
 BOOK TEN PAGE FORTY-FOUR  
 MARCH 30, 2011

SM